

# **CYPTCV11**

# **Control Card Hardware**

# **Instruction Manual**

## Content

1. Definition and Description of Fiber Laser DB25 Interface to Continuous Laser 24V Interface Card Wiring .....	5
2. Main Functions of Adapter Card.....	7

## Preface

Beijing Chongyi Technology Co., Ltd. (CY Tech) is an advanced technology enterprise dedicated to the research, development and application of laser scanning systems. Since its establishment, the company has always focused on providing cutting-edge laser marking, laser cleaning, laser welding software systems and professional technical solutions to global customers. So far, the company has successfully applied for a number of copyright and patent certificates related to laser scanning software. As an enterprise with technology as its core, CY Tech has assembled a R&D team composed of a group of senior engineers and industry experts. Not only are they proficient in various laser scanning technologies and their applications, but they are also able to keenly capture market trends and customer needs and provide tailor-made solutions.

In the field of laser marking, CY Tech has developed a number of efficient and stable software systems. These software systems can be widely used in surface treatment of metals, non-metals, semiconductors and other materials to achieve precise and rapid marking. At the same time, the company also provides customers with one-stop services such as marking effect optimization and material adaptability testing to ensure that customers' products are competitive in the market.

For laser cleaning, CY Tech's R&D team broke through the bottleneck of traditional cleaning technology and developed an efficient and environmentally friendly laser cleaning software system. This system can be widely used for surface cleaning of

various materials, such as metal, plastic, glass, etc., solving various cleaning problems for customers.

What's more, we are also engage in laser welding's R&D, CY Tech also has rich experience and technology accumulation. The laser welding software system developed by the company has the characteristics of high precision, high speed and high stability, and can be widely used in automobile manufacturing, aerospace, electronics manufacturing and other industries.

In addition to providing software systems, CY Tech also provides customers with a full range of technical support and services. The company has a professional pre-sales team and after-sales team that can provide customers with timely and effective technical support and after-sales services. At the same time, the company also provides training and guidance to customers to help them better apply and maintain software systems. The company has strong R&D capabilities and a professional technical team to provide customers with high-quality and reliable technical services. If you need software systems and technical support for laser marking, laser cleaning, laser welding, etc., please contact us!

## Security Information

1. Please read this section carefully before using the CYPTCV11 control card. This product is a system used to control stepper motors. If you have any questions, please contact our company in time.
2. Please prevent the board from being damaged by moisture, dust, corrosion, and impact from foreign objects. When storing and using the board, please avoid damage by electromagnetic fields and static electricity.
3. Before starting the wiring, you need to carefully read the interface definition and instructions, and perform wiring according to the instructions to avoid damage to the board and peripherals.
4. When using it with other boards of our company, you need to read the instructions for use of the stepper motor related parts of the board.

# 1. Definition and Description of Fiber Laser DB25 Interface Card Wiring

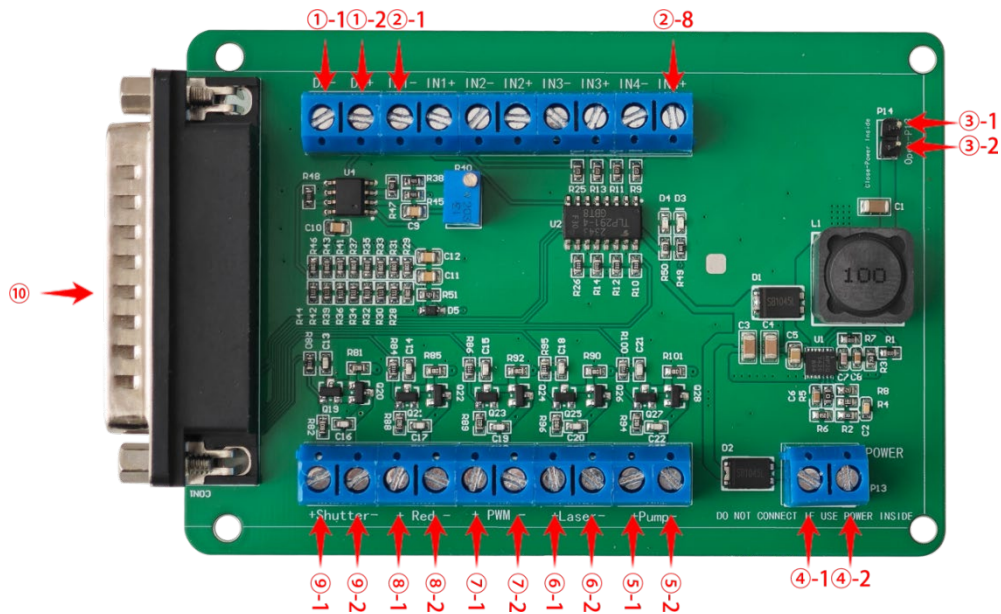


Figure 1-1 Control card interface labeling diagram

No.	Terminal	Functions	Cables order
①	DA	Analog output, 0-10V	①-1: DA-, ①-2: DA+
②	Input port	Receive external input signal	②-1: IN1-, ②-2: IN1+, ②-3: IN2-, ②-4: IN2+, ②-5: IN3-, ②-6: IN3+, ②-7: IN4-, ②-8: IN4+
③	Jumper interface	Short the jumper to provide internal 24V power supply for the system (external 24V power supply cannot be used in this state)	

④	24V interface	Provide external 24V power supply for the system (internal 24V power supply cannot be used in this state)	④-1: +24V, ④-2: GND
⑤	PUMP	Continuous laser 24V enable signal	⑤-1: PUMP+, ⑤-2: PUMP-
⑥	LASER	Continuous laser 24V enable signal	⑥-1: LASER+, ⑥-2: LASER-
⑦	PWM	Continuous laser 24V enable signal	⑦-1: PWM+, ⑦-2: PWM-
⑧	RED	Continuous laser 24V enable signal	⑧-1: RED+, ⑧-2: RED-
⑨	SHUTTER	Default 24V output	⑨-1: SHUTTER+, ⑨-2: SHUTTER-
⑩	Pulsed laser interface	Standard pulsed laser DB25 interface	

Table 1-(1) External interface definition

## 2. Main Functions of Adapter Card

The main function of the fiber laser DB25 interface to continuous laser 24V interface card is to convert the pulse laser control signal output by the control system into a continuous laser control signal, so that the control system can control the continuous laser.

- Realize the conversion of pulse laser control signal into continuous laser control signal
- Four input signals



**If any questions, please be free to contact us. Thank you.**

**Company: Beijing Chongyi Technology Co., Ltd.**

E-Mail: [sales01@bjchongyi.com](mailto:sales01@bjchongyi.com)

Web.: [www.vipeylaser.com](http://www.vipeylaser.com)

We chat: chongyi0201

Whatsapp: +86 185 1158 5382

Address: Room 9001, 9th Floor, Building 2, No. 10, Baifuquan Road, Science &  
Technology Park, Changping District, Beijing, China